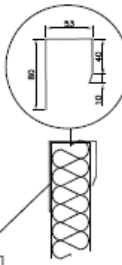
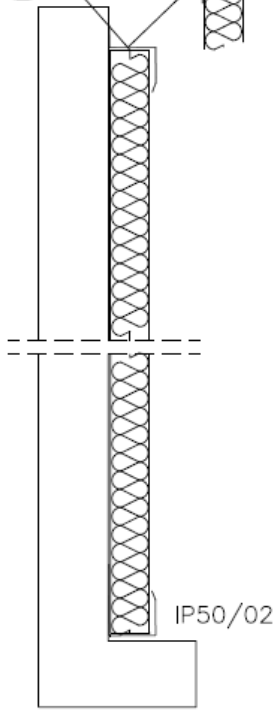


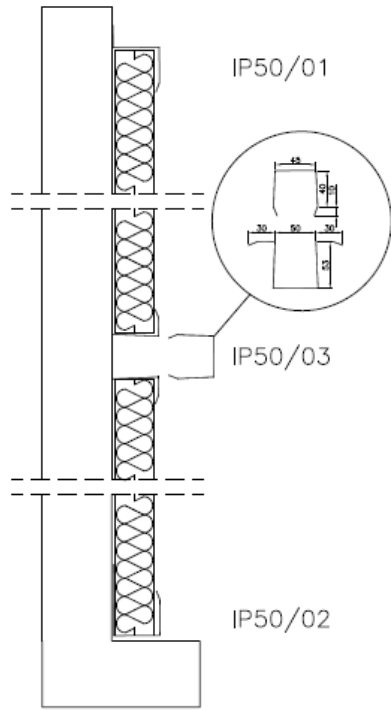
OPTION A - STANDARD
IP50/01



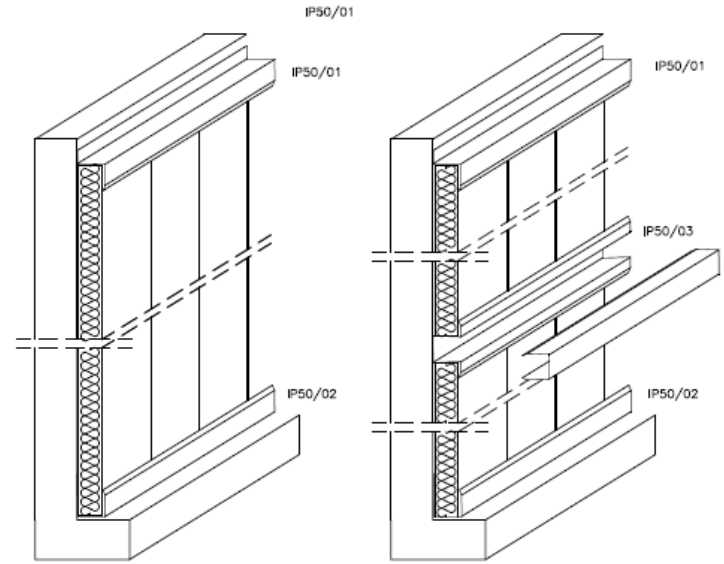
OPTION B (invisible screws)
IP50/02



VERTICAL INSTALLATION
FOR HEIGHT OF PANEL LESS
THAN OR EQUAL TO 3 m.



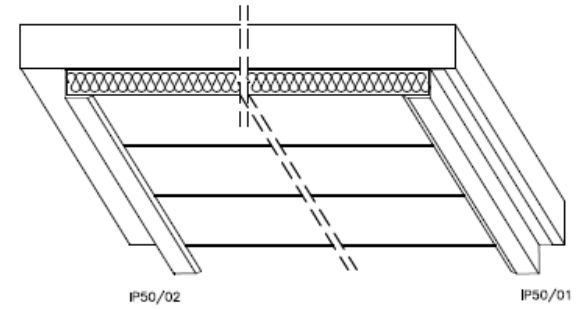
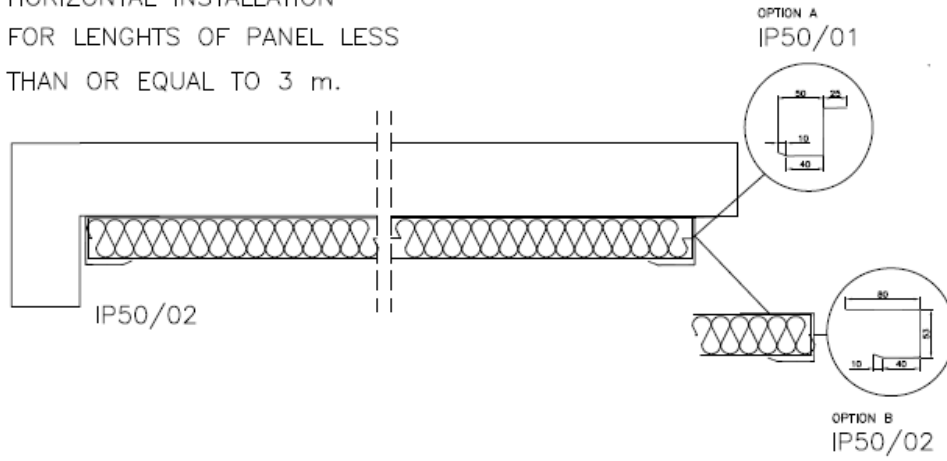
VERTICAL INSTALLATION
FOR HEIGHTS UPPER
THAN 3 m.



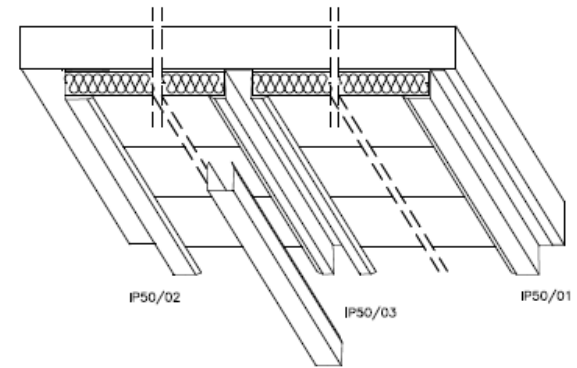
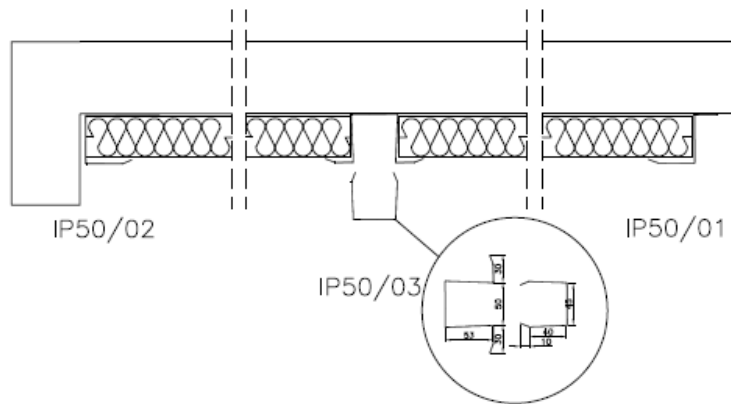
PANELS INSTALLATION IN VERTICAL WALLS

		Cliente:		
N°	AC-50			
N°	01			
		Revision		
	26/04/2011	A		NO
	26/04/2011			

HORIZONTAL INSTALLATION
FOR LENGTHS OF PANEL LESS
THAN OR EQUAL TO 3 m.

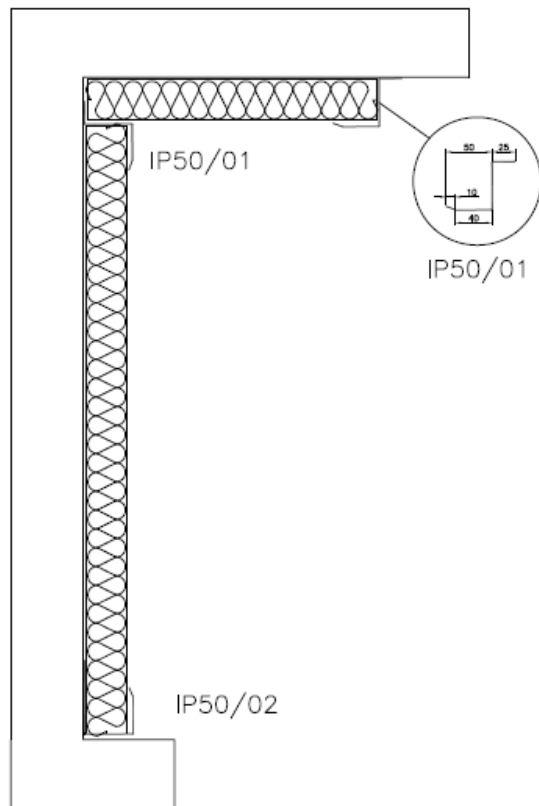


HORIZONTAL INSTALLATION
FOR LENGTHS UPPER
THAN 3 m.

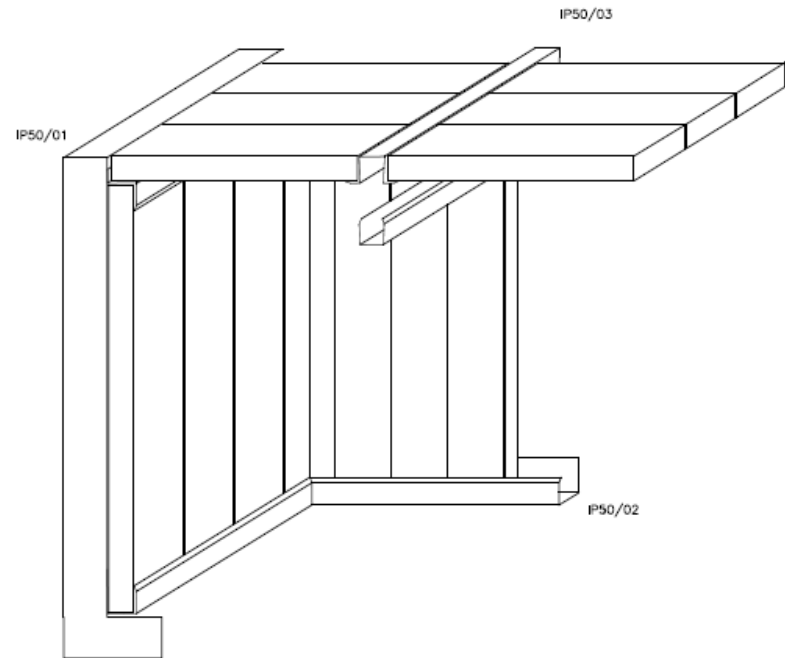


PANELS INSTALLATION IN HORIZONTAL WALLS

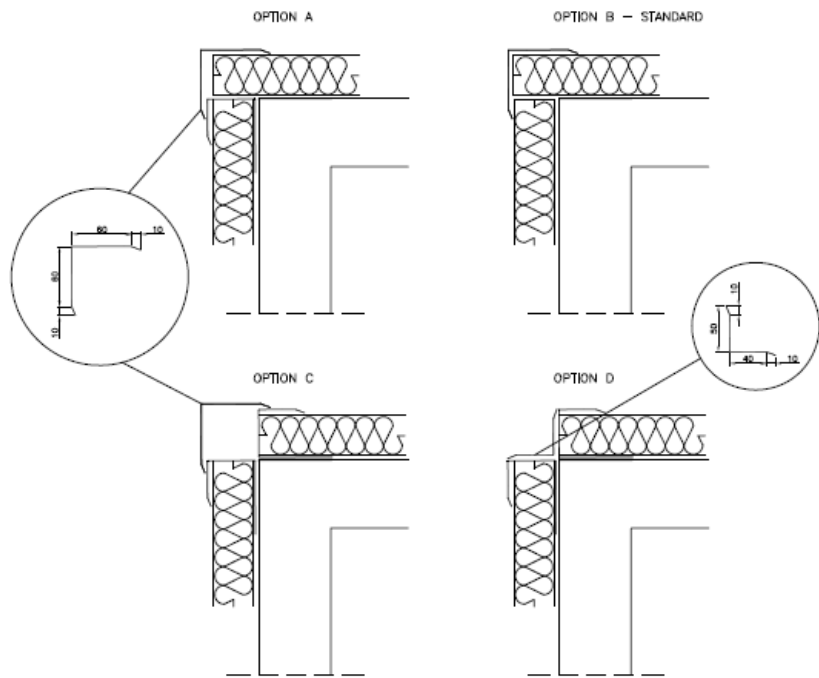
		Cliente:			
N°					
N°	02				
		Revision			
	26/04/2011	A			
	26/04/2011			NO	



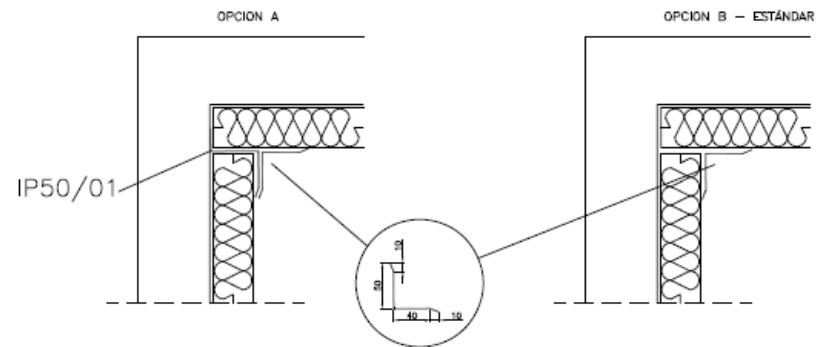
JOINT BETWEEN PANELS
IN VERTICAL AND HORIZONTAL
WALLS



		Cliente:		
N°	AC-50			
N°	03			
		Revision		
	26/04/2011	A		NO
	26/04/2011			



FINISH OFF TWO PANELS IN CORNERS
WITH PROFILE TYPE IP50/05 (EXCEPT
"D" OPTION REALIZED WITH IP50/04)



FINISH OFF TWO PANELS IN CORNERS
WITH PROFILE TYPE IP50/04

		Cliente:		
N°	AC-50			
N°	04			
		Revision		
	26/04/2011	A		
	26/04/2011			NO