

category	sound absorber
description	ProSonic FG acoustic panels
part code	GRG420 - GRG468



PROSONIC FG ACOUSTIC PANELS have a rigid, acoustic-rated fibreglass core with a class 1 fabric covering as standard, available in a wide selection of colours. (Class 0 fabric available on request at additional cost.)

Advantages

- Easy installation
- Various mounting/fixing options
- Standard and custom sizes
- Edge profile options – see below
- Class 0 fire rated core
- Choose shape from rectangle, square, circle, triangle, parallelogram
- Wide colour range
- 25mm–100mm thick
- Class A absorber (except 25mm-thick which is Class D)

These panels are an efficient, durable, cost-effective solution for reducing excessive reverberation in large spaces.

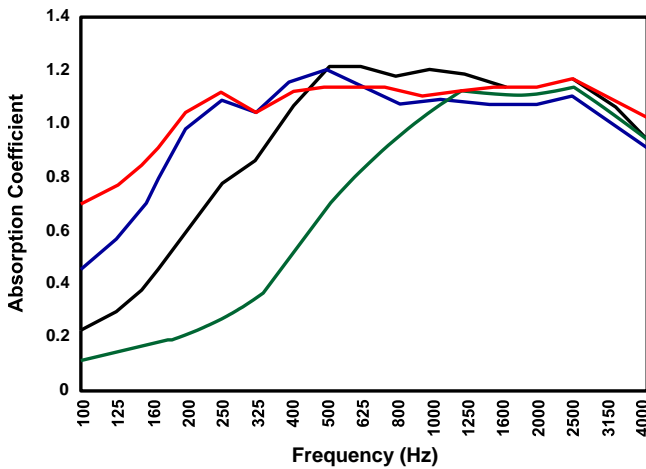
Various fixings are available (see p.2) and units can also be custom made with hooks for easy ceiling mounts, wire hangers or split battens for wall mounting which is ideal if you require them to be removable.



Also available with digitally printed fabric face. Virtually any image can be used provided the aspect ratio is maintained and it is high enough resolution for size of panel (part codes SS240–SS290). Contact us for details.

Acoustic Performance

Random Incident Sound Absorption Coefficients



	Legend	25mm	50mm	75mm	100mm
100 Hz		0.10	0.21	0.45	0.69
125 Hz		0.14	0.29	0.56	0.76
160 Hz		0.16	0.41	0.74	0.88
200 Hz		0.20	0.60	0.98	1.04
250 Hz		0.24	0.76	1.09	1.12
315 Hz		0.35	0.87	1.03	1.03
400 Hz		0.50	1.07	1.15	1.12
500 Hz		0.69	1.20	1.20	1.14
625 Hz		0.83	1.21	1.14	1.14
800 Hz		0.95	1.18	1.07	1.13
1000 Hz		1.05	1.19	1.08	1.10
1250 Hz		1.12	1.18	1.07	1.11
1600 Hz		1.10	1.13	1.07	1.11
2000 Hz		1.10	1.12	1.07	1.09
2500 Hz		1.14	1.15	1.09	1.15
3150 Hz		1.05	1.06	1.02	1.08
4000 Hz		0.92	0.95	0.93	1.02

FIXINGS – please note:

When ordering panels, please advise us if you need fixings. Panels are supplied without fixings unless specifically requested. Certain types need to be specified in advance. There will be an additional cost for supplying various clips, chains or battens.

Advice is available from our technical department.

Applications

Custom Audio Designs' ProSonic FG acoustic absorption panels are often used to meet BB93 standards for reverberation control within schools.

They are suitable for:

- offices
- schools
- theatres
- auditoriums
- studios
- halls
- churches
- gymnasiums
- BB93 solutions
- teleconferencing suites, etc.

Specification

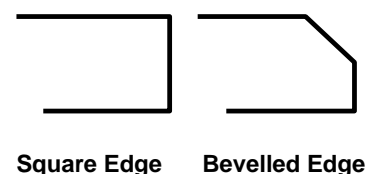
Product - Fibreglass acoustic panels

Part code Size (tolerance ± 3mm)

GRG420	600 x 600 x 25mm
GRG422	1200 x 600 x 25mm
GRG438	1200 x 1200 x 25mm
GRG442	1800 x 1200 x 25mm
GRG444	2400 x 1200 x 25mm
GRG450	600 x 600 x 50mm
GRG452	1200 x 600 x 50mm
GRG465	1200 x 1200 x 50mm
GRG467	1800 x 1200 x 50mm
GRG468	2400 x 1200 x 50mm

Other sizes and custom-made sizes available, please email tech@customaudiodesigns.co.uk

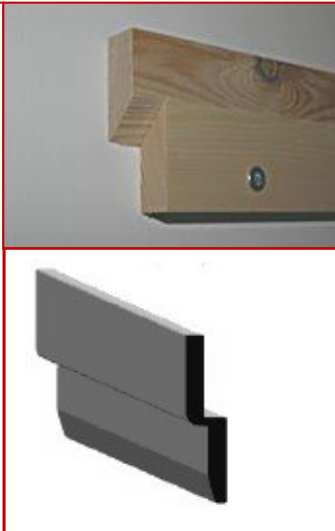
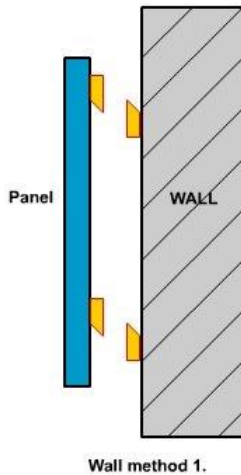
Available Edge Profiles



Square Edge Bevelled Edge

- 96kg/m³ density fibreglass
- Cara fabric as standard

Panels offered up to the wall battens and dropped on



Standard Surface Mount Timber Split Battens (picture above left)

For wall mounting, a split batten is fixed to the wall. The acoustic panel is simply lowered in place. This system allows easy removal and provides an additional airspace behind the panel for improved acoustic absorption. (This option is available for panels of 25mm or thicker.)

Aluminium Batten (picture left)

This is a similar method but much thinner. It leaves virtually no gap between the panel and the wall (approx. 3mm).

This system is available for panels 25mm or thicker.

Please contact us for further details.



Wall Spikes – Metal impaling clips are screwed into the wall. Adhesive is applied to the panel and the wall. The panel is then offered up against the wall spikes and fixed in place.

This method does not allow easy removal of the panels.

For smaller panels spikes can be used without adhesive to allow removal; however, this does not provide a permanent fix so would not be suitable in areas such as schools.



Embedded L-bar with chains/wires

This option allows very large heavy panels to be hung from the ceiling.

Panels 25mm or thicker.

Wire hanging systems



Complete with a 1.5m cable, gated hook end, and wire loop. Fully adjustable with the built in friction clutch.

Magnets



- This option is available on panels 25mm or thicker.
- Ideal for:
 - easy removal of panels
 - fixing panels to a metal surface.
- Can be used for walls or ceilings.

These fibreglass panels are easy to install and can be made in a wide range of custom sizes. Fixing can be with optional impaling clips or adhesive. Units can also be supplied with a wooden frame surround for ceiling or wall mounting. (See also above for split batten fitting.)

Bespoke

- Any height up to 3000mm; any width up to 1200mm
- Thicknesses from 25mm upwards in multiples of 25mm
- Different edge profile options
- Other fabric options are also available at additional cost

Metal 'Z' Bars

This option allows very large heavy panels to be hung from the ceiling or walls

This option is available on panels 25mm or thicker.



Hooks

Probably the easiest and most versatile method of hanging the panels from a ceiling, **but not generally recommended for large, heavy panels**

The hooks are simply screwed into the panel which can then be hung from chains.



The black backing scrim needs to be cut away before these fixings are screwed in. Contact our technical department for method and placement. This image is not to scale and fixings should not be near the panel edges.



Please note: if using the wire suspension systems with spiral hooks, the spiral hooks should be 200–300mm in from the panel edges (panel size dependent) to prevent uneven load distribution which, over time, could cause the panels to bend. (This will also help to hide the wires from sight.)

Delivery, Storage and Handling

Packing, Shipping, Handling and Unloading

Panels are susceptible to damage and must be handled with great care when removing from packaging and when transporting.

Panels greater than 16 square feet must be carried by a minimum of two people. Panels must **never** be set down on fabric faces, only on the panel back.

Storage and Protection

How to store panels:

- in original packaging until ready to install
- in temperature and humidity controlled conditions for 24 hours prior to installation
- protected from moisture and infestation
- with fabric finish protected from elements that would puncture, tear, snag or otherwise damage the fabric.

Features:

- Edges are square and plumb to within a tolerance of 2mm.
- Absorption Coefficients and Noise Reduction Coefficient for the product are measured by an independent, accredited NVLAP facility according to the test methods as defined by ASTM C 423 and ASTM E 795.
- Flame Spread and Smoke Developed are tested by an independent, accredited NVLAP facility according to the test methods as defined by ASTM E 84 and NFPA 255.
- Composite Flame Spread Rating of less than 25.
- Smoke Development of less than 450.
- Available with a wide variety of custom fabrics.

Dimensions:

- Custom sizes can be specified up to 3000mm (H) x 1200mm (W) and with a depth in multiples of 25mm.



NBS

- Manufacturer: Custom Audio Designs Ltd
 - Web: www.customaudiodesigns.co.uk
 - Tel: +44 (0) 1730 269572
 - Product ref: ProSonic F/G fabric wrapped acoustic absorbing panel.
- Size: [??? x ??? mm]. Any size up to 3000 x 1200mm
- Thickness: [25, 50, 75 or 100 mm]
- Fabric/colour: [Cara EJ _____]
- Mounting:
 - [Surface mount using a wooden frame]
 - [Surface mount using spikes]
 - [Surface mount using adhesive]
 - [Z bar ceiling fixings]
 - [Ceiling cloud rings]
 - [Magnetic]
 - [Timber split battens proud]
 - [Timber split battens recessed]
 - [Metal Ali Batts]
 - [Ceiling wires]
- Edge detail:
 - [Square]
 - [Bevelled]







